

APPLICATION FILE

WELCOME REIMS 2018



WARM-UP 2018

EUROPEAN CHAMPIONSHIP 2018



1/10 OFF ROAD indoor



9 rue Léon TIXIER

FR-51100 REIMS

tél/fax: +33(0) 326 365 997

Site : reims-emc.com

E.mail: remc@reims-emc.com



WELCOME REIMS 2018



REIMS- The capital of CHAMPAGNE



**City of Culture,
of Tradition,
of Gastronomy
and of Sport**



After EUROPEEN CHAMPIONSHIP offroad 1/8th 2005 and 2013



WELCOME REIMS 2018

- The **REIMS ENDURO MODEL CAR** is affiliated with the Federation of Radio-Command Model cars (FFVRC), at the Office of Sports of the City of Reims and certified by Sport for Youth.
- Established in 1987, its race tracks, located since 1999 in the sport field complex of Trois Fontaines in Reims, are recognized today as one of the best in France and Europe.
- The **REIMS EMC** organised over 40 Championships for France and the French Cup for all disciplines. In 2005 and 2013, the European Championships TT 1/8 was a great success.
The Reims Club and the French Federation in organising such events with quality reception and to promote our sport.
- The **REIMS EMC** would have the full support of the City of Reims (220 000 inhabitants) and the Regional Counsel of the Marne as well as from important partners of the private sectors.

Three key words that encompass our endeavour:

QUALITY

WELCOME

PROMOTION

WELCOME REIMS 2018



VIDEO

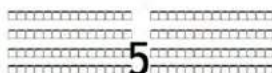


WELCOME REIMS 2018

The track of the center of town

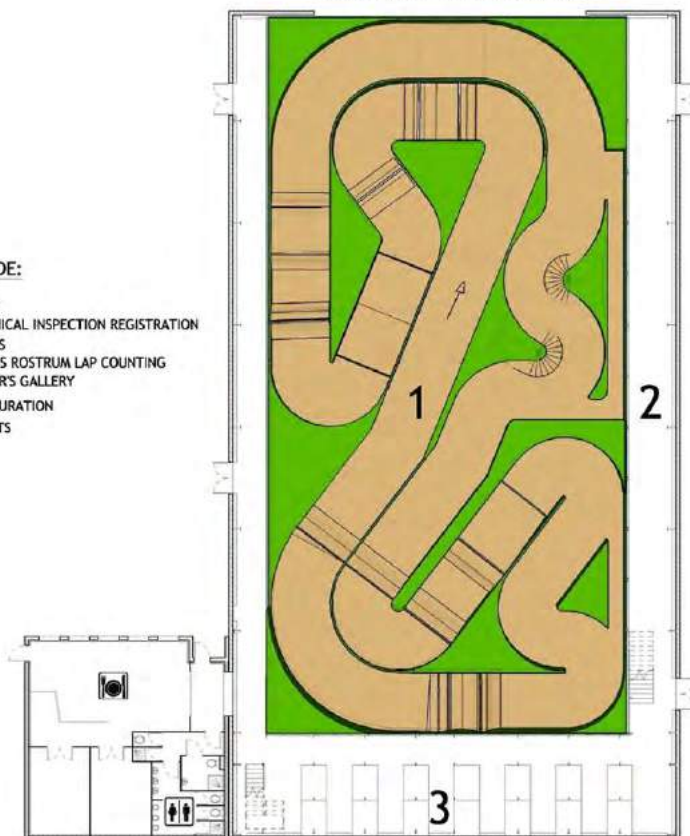


MAP HALL

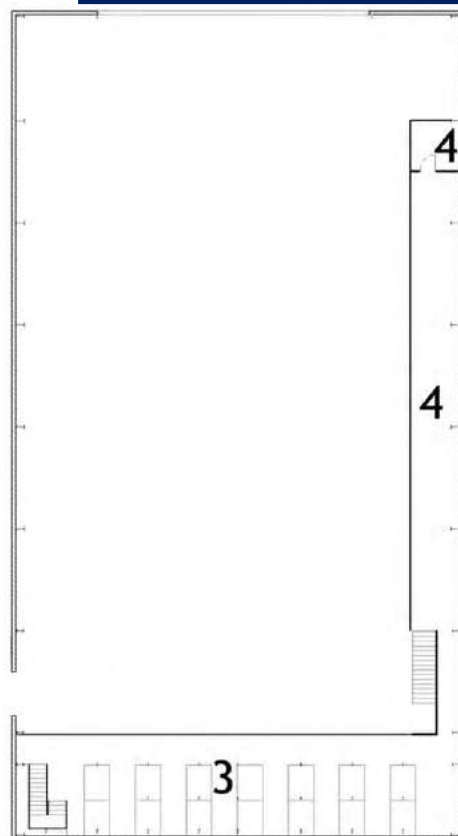


LEGENDE:

- 1: TRACK
- 2: TECHNICAL INSPECTION REGISTRATION
- 3: STANDS
- 4: STANDS ROSTRUM LAP COUNTING
- 5: VISITOR'S GALLERY
- RESTAURATION
- TOILETS



GROUND FLOOR



FLOOR

Surface Hall 1300m²
L: 48m I: 26m

Length 210m
Width 3,50m
Lap time 23s

Track:
100% ground - clay loam

WELCOME REIMS 2018



The Infrastructures, regarding “Drivers and Mechanics”

The TRACK

Layout is 210m with a 3,5m width throughout. The surface consists of a clay loam, is particularly resistant.

The **ROSTRUM**, length is 18m and adapted for 20/25 drivers.

The **TECHNICAL AREA** (Cleaning, Cleaning Compressors, **Traitement pneus**)

The STANDS

The present stands can accommodate 160 drivers (2 floors) and are equipped with workbenches and 220V.

A big top tent next to the speed track would complete the stands to receive the additional drivers.

THE SOUNDSYSTEM

The facilities regarding Organisation, Referes, Team-Managers

The ROSTRUM

The Referes and the Race Director have their own control screen and all necessary communication equipment, adjacent to the chrono office.

THE CHRONO OFFICE BOOTH

This booth is fully equipped and unchanged since the European Championships 2005-20013. It is air-conditioned and its installation and separate electrical supply are fully secured

Computer Information center on network backed by double printout.

THE INFORMATION BOARDS

Two screens below the Rostrum for the mechanics

Three screens in the Stands

A giant information board for the participants and the public spectators

An information board in the Stands for the results

RECEPTION- SECRETARIAT

A bungalow will be installed for the reception by the general secretariat of the drivers, the mechanics, the sponsors, the media and press.

A permanent secretarial service will be provided throughout the competition.

WIFI

The hall and the commodities are equipped with WiFi

WELCOME REIMS 2018

The Track - Technical Description



Overall panoramic view



Obstacles



Chrono office



Stands and project to build the floor for the stands

THE FACILITIES FOR THE PRESS

PRESS RECEPTION

PRESS ROOM

PRESS CONFERENCE ROOM

SIGHT TOWER for photos and TV.

INSTANT RESULTS



INFRASTRUCTURES FOR PROMOTION AND THE PUBLIC

RESTAURANTS

WASHROOMS The site and space will be according to Sanitary Regulations in effect

SECURITY MANAGEMENT

FIRST AID

PARKINGS

CAMPING FOR COMPETITORS A campsite is envisaged to accommodate 50 units for about 150 people , and if needed even more.

PUBLIC ACCES Two grand stands would be installed for 600 spectators, with free access.

SPONSORS VILLAGE

EXPO TENT - SHOW ROOM

Rostrum and Prize Distribution



D944



LEGENDE

1	TRACK	7	Office Team Manager
2	CAMPING	8	Compressor- Motor testing- Cleaning
3	PARKING COMPETITORS		Race area
4	PARKING Organisation - VIP		Restauration
5	Technical inspection- Registration		Toilettes
6	Stands Rostrum Lap-Counting		

MAP GENERAL

WELCOME REIMS 2018

The ACCESS

By Road

- A4 PARIS- METZ- STRASBOURG -Direction Germany
- A26 CALAIS - Direction Great Britain
- LILLE - Direction Belgium
- TROYES - Direction LYON
- A34 CHARLEVILLE- MEZIERES -Direction Belgium

By Air

Reims is connected by highway to the airports:

- PARIS Airport ROISSY Charles de GAULLE 140 km in 1h35
- PARIS Airport ORLY 150 km in 1h40
- CHARLEROI Airport 154 km in 1h50
- LUXEMBOURG Airport 180 km in 2h10
- LILLE Airport 180 km in 2h00
- BRUXELLES Airport 240km in 3h00

By Train

- The city has two train stations:
- The main Reims station in the center of town
- The TGV station Champagne-Ardenne
- The TGV East serves REIMS in 45 min from PARIS Gare de l'Est.
- The Roissy-Charles-de-Gaulle airport in 35 min. from Gare TGV Marne-la-Vallée.



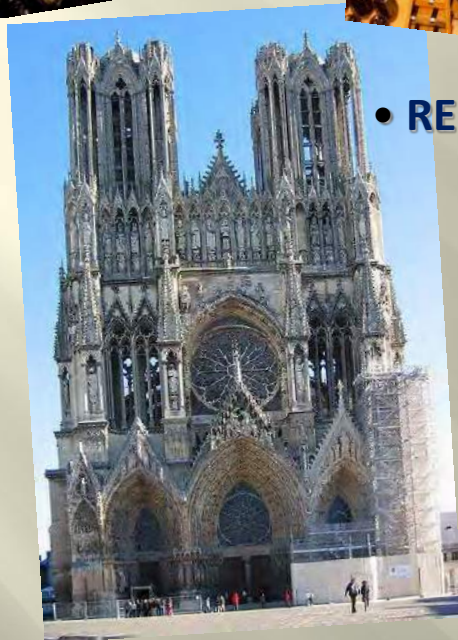
WELCOME REIMS 2018



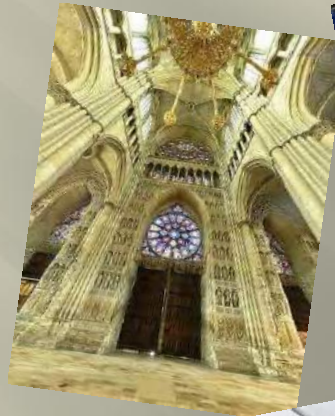
• REIMS CAPITAL of CHAMPAGNE



• REIMS a gastronomic Region



• REIMS a rich past of culture.



REIMS TOURIST OFFICE:

Site: www.reims-tourisme.com
Adress: 2 Rue Guillaume de MACHAULT
REIMS 51100
Phone: +33(0) 8 92 70 13 51



220 Restaurants
90 Hôtels

WELCOME REIMS 2018

Last but not least

To create a place of quality and conviviality in meeting of all Federations, Members, Professionals, Drivers, Amateurs, Media and the Press.

Bar lounge.

Sponsors Village.

Press Conference at the end of each day

Gala evening at the closing of this event in the Big Tent

To ensure the dimension and quality at all levels, for the installations, organisation, security- all the way down to maintenance of order and cleanliness.

Propose a half day off for a bit of sight seeing and to discover the beauty and richness of our region.

To ascertain that the public receives a perfect live communication with appropriate and timely animations.

The installation and availability of appropriate Grand Stands and a Show Room

Discovery of the R/C car with exhibits - Reims EMC and FFVRC

Reims Tourist Office.

Sales Area

Our Strengths:

An established recognition and support for our R/C car sport activities by the city and the local authorities.

An experienced and competent team capable to organise and manage an event of this magnitude.

A city with easy access who fully supports this great project

A city and a region that offers so many tourist and cultural attractions - plus Champagne

Three key words that encompass our endeavour:

- **QUALITY**
- **WELCOME**
- **PROMOTION**

